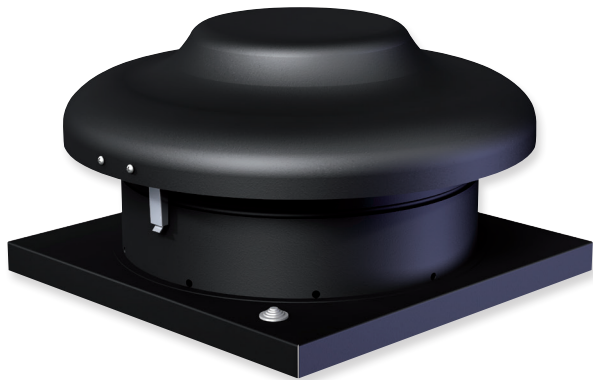
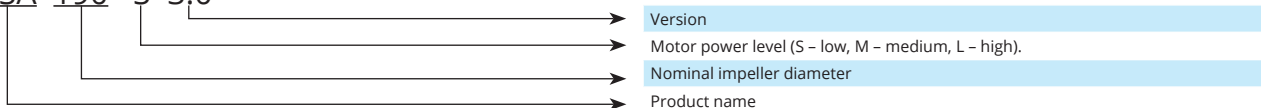


VSA 3.0









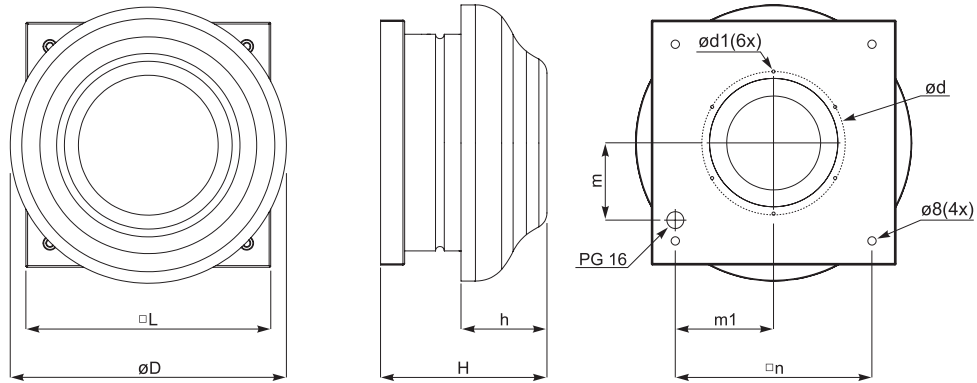
Features	<ul style="list-style-type: none"> › 4 sizes; › Airflow up to 1170 m³/h; › Horizontal exhaust; › Backward-curved impeller; › Cost-effective.
Power supply	230V/50Hz/1f.
Temperature range	From -40°C up to 40/65°C.
Sizes	190 S, 190 L, 220 S, 220 M, 225 L, 250 L.
Construction	<ul style="list-style-type: none"> › Casing: powder-coated steel, RAL 9005; › Motor protected from external objects; › Fan: centrifugal impeller and external rotor motor; › Motor protection with built-in thermal contact; › Motor protection class: IP44; › Terminal box protection class: IP55.
Installation	<ul style="list-style-type: none"> › Device can be connected to pull air directly from ventilated room or air duct system. › Not suitable for polluted air or volatile and explosive gases.
Speed control options	<ul style="list-style-type: none"> › Electronic voltage controller (phase cut); › Voltage controlled speed controller.

VSA 190 S 3.0



Accessories

<p>Single phase speed controller</p>  <p>TGRV p. 127</p>	<p>Single phase speed controller</p>  <p>ETY p. 128</p>	<p>Curb skirt</p>  <p>SSA p. 138</p>	<p>Curb skirt</p>  <p>SSA 45 p. 138</p>	<p>Roof curb</p>  <p>KSV p. 132</p>	<p>Flange-adapter</p>  <p>FSV p. 137</p>
--	---	--	---	---	--



Type	Dimensions [mm]								
	øD	H	h	□L	ød	ød1	m	m1	□n
VSA 190 S 3.0	344	207	107	305	177	M4	96,5	123,5	245
VSA 190 L 3.0	344	207	107	305	177	M4	96,5	123,5	245
VSA 220 S 3.0	450	214,35	109	405	230	M5	138	168	330
VSA 220 M 3.0	450	214,35	109	405	230	M5	138	168	330
VSA 225 L 3.0	450	245,55	109	405	230	M5	138	168	330
VSA 250 L 3.0	450	245,55	109	405	230	M5	138	168	330

Type	Accessories								
	TGRV	ETY	SSA	SSA 45	KSV	FSV	ATS	LSV	
VSA 190 S 3.0	1,5	1,5	300	300	300/600	160	190	160	
VSA 190 L 3.0	1,5	1,5	300	300	300/800				
					300/900				
VSA 220 S 3.0	1,5	1,5	400	400	400/600	250	250	250	
VSA 220 M 3.0	1,5	1,5	400	400	400/800				
VSA 225 L 3.0	1,5	1,5	400	400	400/900	250	250	250	
VSA 250 L 3.0	1,5	1,5	400	400	400/1000				

Back draft shutter

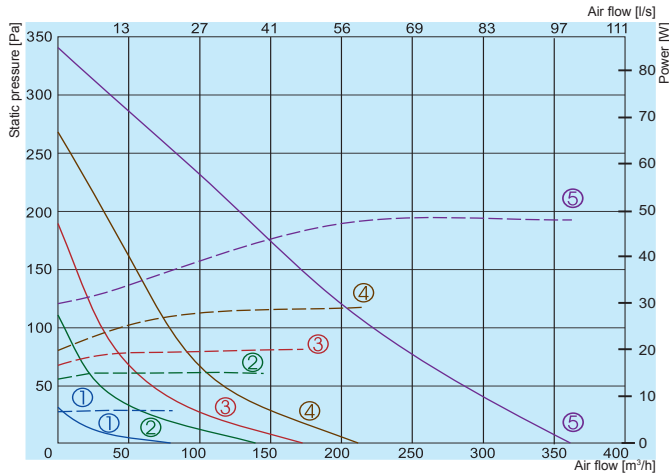

ATS p. 135

Flexible connection


LSV p. 136

VSA 3.0

VSA 190 S 3.0



Performance
Power consumption

- ① 80V
- ② 120V
- ③ 140V
- ④ 170V
- ⑤ 230V

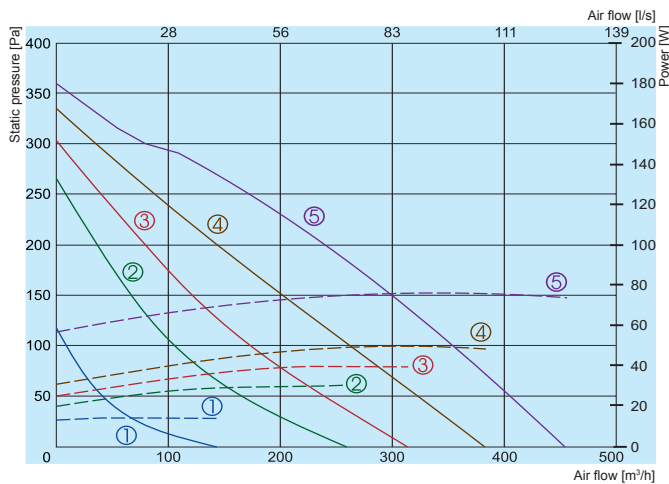
190 S 3.0

Inlet
Outlet
Surrounding

Lwa total, dB(A)	Lwa, dB(A)						
	125 Hz	250 Hz	500 Hz	1 kHz	2 kHz	4 kHz	8 kHz
Inlet	61	43	50	53	57	54	48
Outlet	62	42	56	52	56	56	43
Surrounding	59	44	53	51	53	51	38

Measured at 236 m³/h, 82 Pa

VSA 190 L 3.0



Performance
Power consumption

- ① 80V
- ② 120V
- ③ 140V
- ④ 170V
- ⑤ 230V

190 L 3.0

Inlet
Outlet
Surrounding

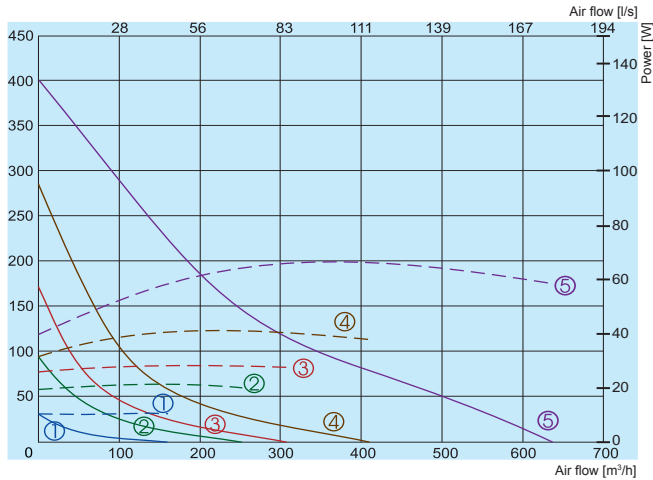
Lwa total, dB(A)	Lwa, dB(A)						
	125 Hz	250 Hz	500 Hz	1 kHz	2 kHz	4 kHz	8 kHz
Inlet	66	44	55	59	60	61	43
Outlet	69	45	60	62	65	60	44
Surrounding	61	38	52	54	58	54	34

Measured at 299 m³/h, 152 Pa

		VSA 190 S 3.0	VSA 190 L 3.0
Voltage/Frequency	[V/Hz]	230/50	230/50
Power consumption	[kW]	0,049	0,074
Current	[A]	0,2	0,31
Speed	[min ⁻¹]	2750	2800
Capacitor	[µF]	4	2
Max. airflow	[m³/h]	360	456
Min./Max. air temperature	[°C]	-40\55	-40\55
Weight	[kg]	4,4	4,4
Wiring diagram		No. 2	No. 1
Protection class:	motor	IP-44	IP-44
	terminal box	IP-54	IP-54
Comply with ERP		2016	2016

The fan characteristic curves were determined in accordance with EN ISO 5801. The sound levels were determined in accordance with DIN 45635 resp. ISO 3744 at a distance of 1 m from the fan.

VSA 220 S 3.0



Performance
Power consumption

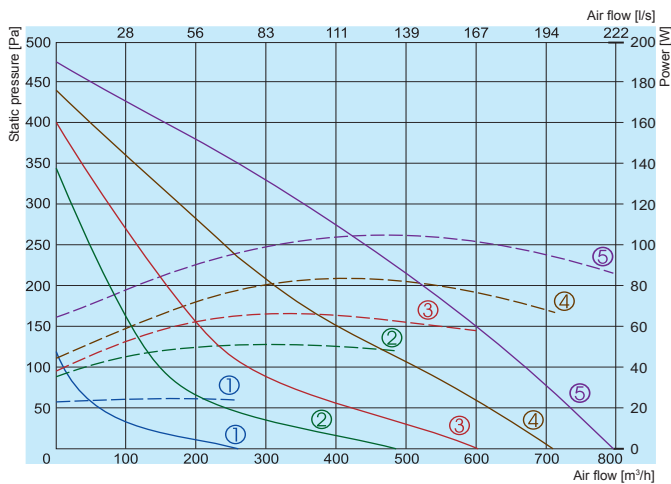
- ① 80V
- ② 120V
- ③ 140V
- ④ 170V
- ⑤ 230V

220 S 3.0

Lwa total, dB(A)	Lwa, dB(A)						
	125 Hz	250 Hz	500 Hz	1 kHz	2 kHz	4 kHz	8 kHz
Inlet	67	48	54	61	62	59	56
Outlet	68	50	58	63	63	60	55
Surrounding	60	43	51	54	56	51	47

Measured at 299 m³/h, 114 Pa

VSA 220 M 3.0



Performance
Power consumption

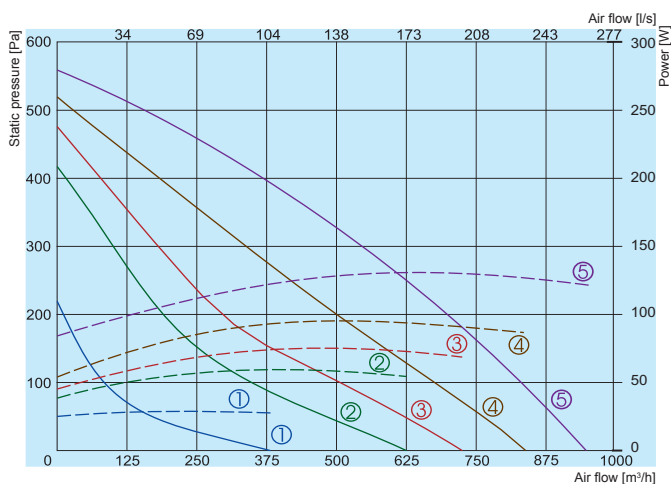
- ① 80V
- ② 120V
- ③ 140V
- ④ 170V
- ⑤ 230V

220 M 3.0

Lwa total, dB(A)	Lwa, dB(A)						
	125 Hz	250 Hz	500 Hz	1 kHz	2 kHz	4 kHz	8 kHz
Inlet	71	56	58	66	65	63	61
Outlet	71	53	63	64	66	62	60
Surrounding	65	48	55	58	62	57	53

Measured at 556 m³/h, 182 Pa

VSA 225 L 3.0



Performance
Power consumption

- ① 80V
- ② 120V
- ③ 140V
- ④ 170V
- ⑤ 230V

225 L 3.0

Lwa total, dB(A)	Lwa, dB(A)						
	125 Hz	250 Hz	500 Hz	1 kHz	2 kHz	4 kHz	8 kHz
Inlet	69	52	57	63	65	63	56
Outlet	72	51	59	66	68	66	53
Surrounding	66	45	54	57	62	60	48

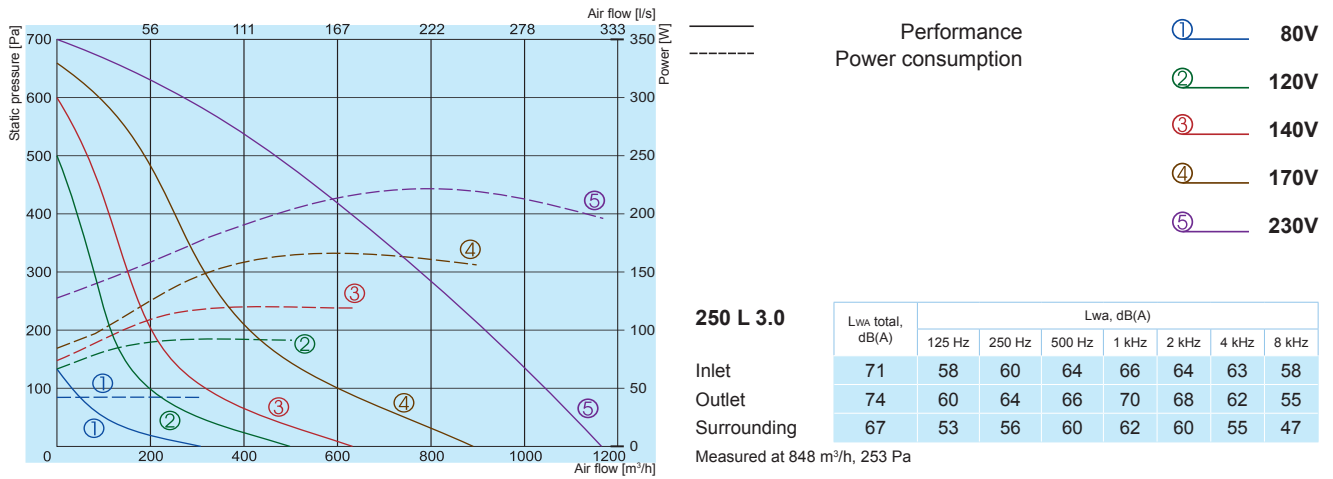
Measured at 594 m³/h, 273 Pa

The fan characteristic curves were determined in accordance with EN ISO 5801. The sound levels were determined in accordance with DIN 45635 resp. ISO 3744 at a distance of 1 m from the fan.

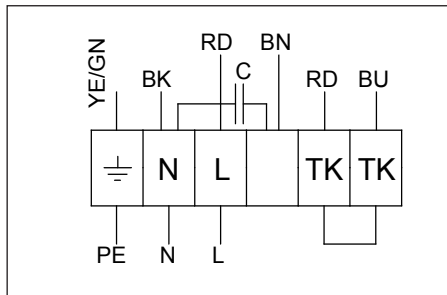
The company reserves the right to make changes of technical data without prior notice

VSA 3.0

VSA 250 L 3.0

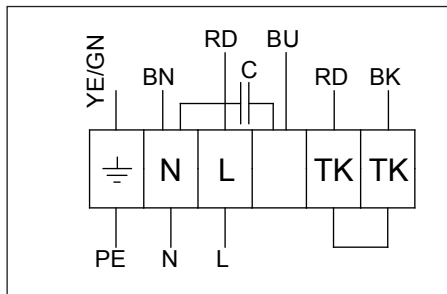


	VSA 220 S 3.0	VSA 220 M 3.0	VSA 225 L 3.0	VSA 250 L 3.0
Voltage/Frequency	[V/Hz]	230/50	230/50	230/50
Power consumption	[kW]	0,067	0,106	0,221
Current	[A]	0,28	0,45	0,94
Speed	[min ⁻¹]	2600	2800	2660
Capacitor	[μF]	4,0	2,0	4,0
Max. airflow	[m ³ /h]	636	795	950
Min.\Max. air temperature	[°C]	-40\75	-40\75	-40\85
Weight	[kg]	6,7	6,7	7,6
Wiring diagram		No. 2	No. 1	No. 1
Protection class:	motor	IP-44	IP-44	IP-44
	terminal box	IP-54	IP-54	IP-54
Comply with ERP		2016	2018	2018



Wiring diagram No. 1

YE/GN - green-yellow
BK - black
RD - red
BU - blue
BN - brown



Wiring diagram No. 2

YE/GN - green-yellow
BK - black
RD - red
BU - blue
BN - brown