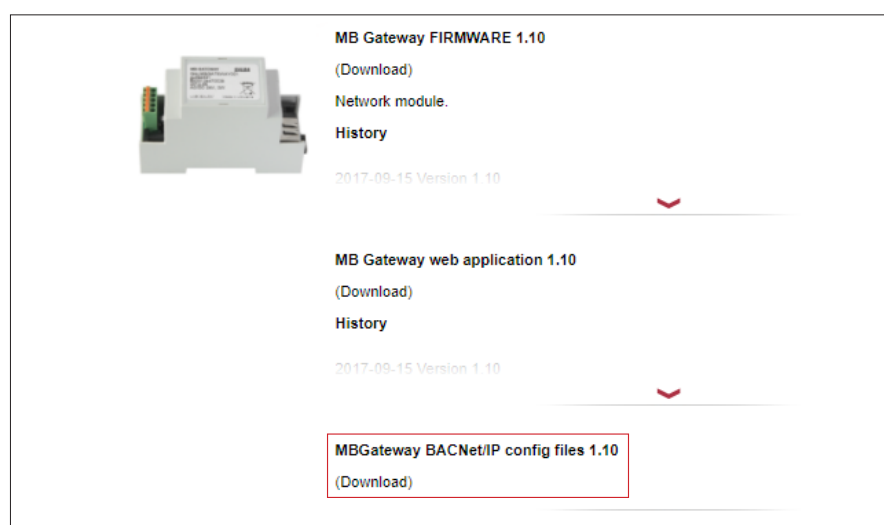


# BACNET/IP CONFIGURATION MANUAL FOR PRV CONTROL BOARDS

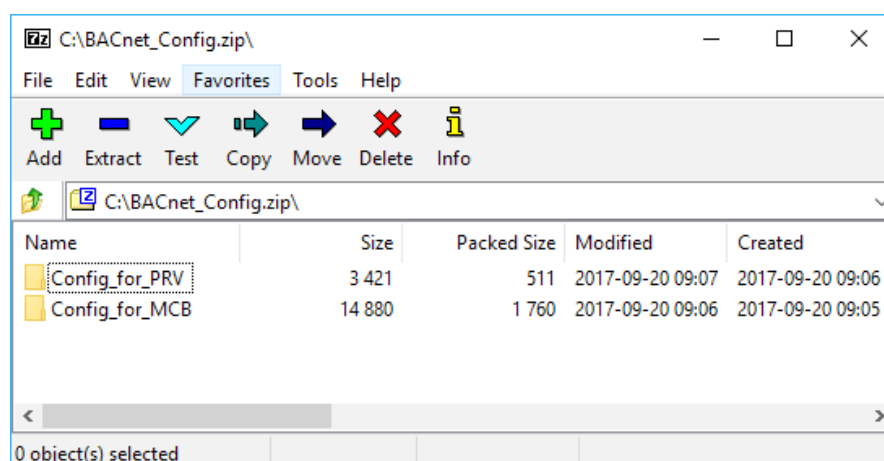
BACnet/IP support has been added in Firmware version 1.10. By default MB-Gateway BACnet/IP is prepared for communication with MCB control boards. To configure MB-Gateway BACnet/IP for PRV control boards please follow these steps:

1. Download default BACnet configuration files *BACnet\_config.zip* from [http://www.salda.it/en/products/category/download\\_page/](http://www.salda.it/en/products/category/download_page/) (Figure 1.)



**Figure 1.** BACnet configuration download page

2. Extract downloaded archive. The archive contains default BACnet configuration files for PRV control boards (in folder *Config\_for\_PRV*) and for MCB control boards (in folder *Config\_for\_MCB*) (Figure 2.)



**Figure 2.** BACnet\_Config.zip content

3. Copy file *BACNET.XML* from folder *Config\_for\_PRV* to MB-Gateway microSD card folder *BACNET*. Copying can be done by removing microSD card from MB-Gateway, or by using FTP client.

3.1. Copying by removing microSD card:

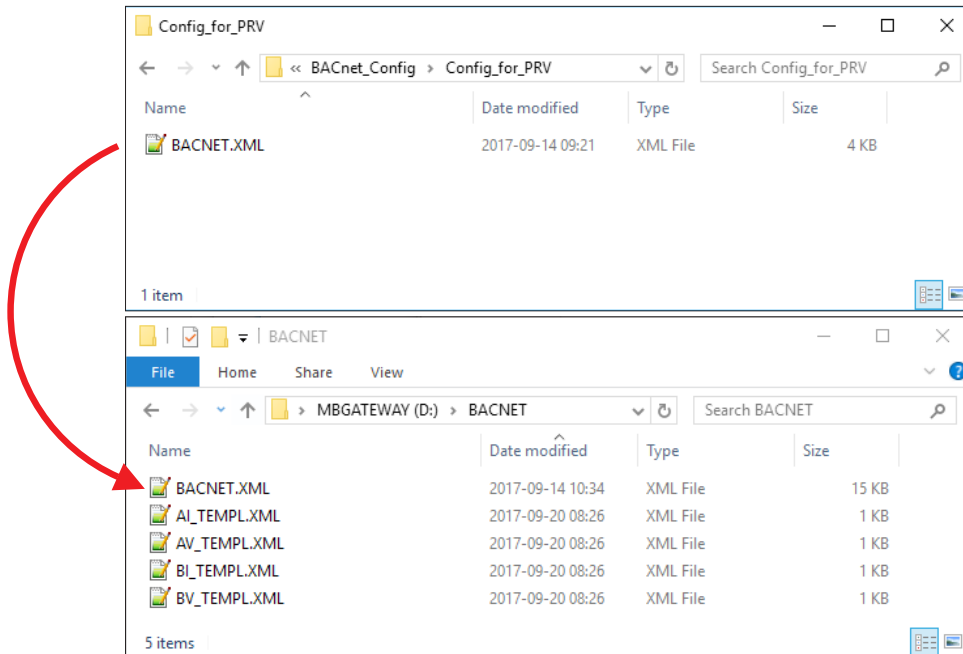
3.1.1. Power off MB-Gateway.

3.1.2. Remove microSD card from MB-Gateway.

3.1.3. Insert microSD card to SD adapter and place it to your computer SD card reader.

3.1.4. Copy configuration file *BACNET.XML* from folder *Config\_for\_PRV* to MB-Gateway microSD card folder

*BACNET* (Figure 3.).



**Figure 3.** Configuration file *BACNET.XML* copying

3.1.5. Place back microSD card to MB-Gateway.

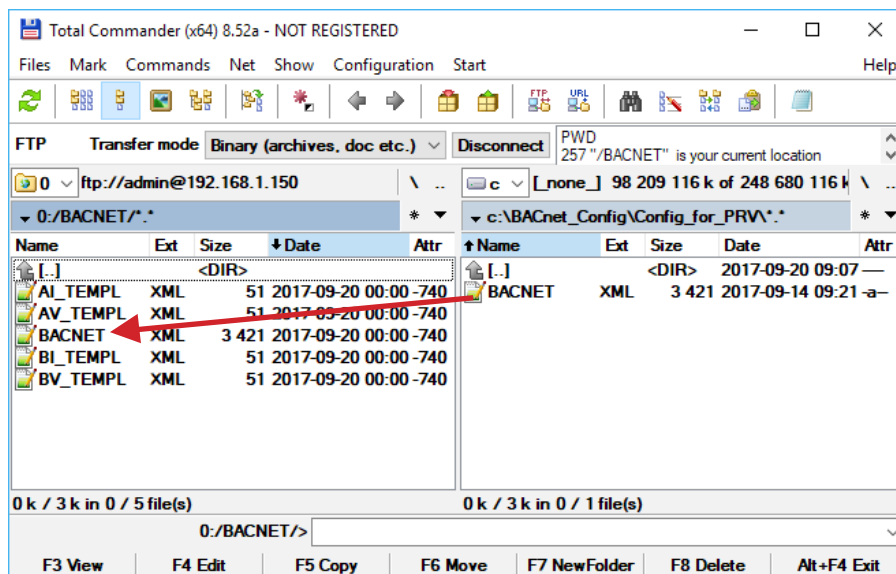
3.1.6. Power on MB-Gateway.

3.2. Copying using FTP client:

3.2.1. Connect to MB-Gateway FTP server using recommended FTP client Total Commander.

3.2.2. Change directory to */BACNET*.

3.2.3. Copy the configuration file *BACNET.XML* from folder *Config\_for\_PRV* (Figure 4.).



**Figure 4 .** Configuration file *BACNET.XML* copying

3.2.4. Disconnect from MB-Gateway FTP server.

3.2.5. Reboot MB-Gateway.

To configure MB-Gateway BACnet/IP for MCB control boards copy configuration file *BACNET.XML* from folder *Config\_for\_MCB*.