



# AVA S/AVA DX RWC/RFC

EN OPERATION, INSTALLATION & MAINTENANCE INSTRUCTIONS



**CONTENT**

<b>2.SYMBOLS AND MARKING</b>	<b>3</b>
<b>3.SAFETY INSTRUCTIONS AND PRECAUTIONS</b>	<b>4</b>
<b>4.INFORMATION ABOUT THE PRODUCT</b>	<b>5</b>
4.1. DESCRIPTION	5
4.2. DIMENSIONS AND WEIGHT	5
<b>5. INSTALLATION</b>	<b>8</b>
5.1. RECEPTION OF GOODS	8
5.2. TRANSPORTATION AND STORAGE	8
5.3. UNPACKING	8
5.4. MOUNTING	8
<b>6. MAINTENANCE</b>	<b>10</b>
<b>7.DECLARATION OF CONFIMITY</b>	<b>11</b>
<b>8. WARRANTY</b>	<b>12</b>
8.1. LIMITED WARRANTY COUPON	12

## 2. SYMBOLS AND MARKING



**Warning – pay attention**



**Additional information**

Apply the auxiliary label on the unit (on an easily accessible location) or on the dashed location of the technical manual in order to keep the important information about the unit.

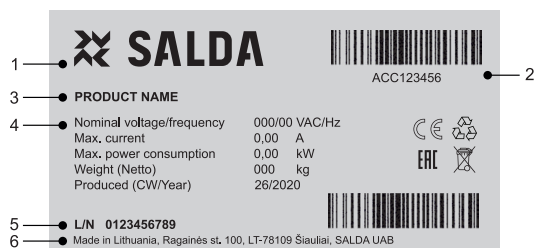


Figure. 2.1. Technical label

1 - Logo; 2 - Product code (SKU); 3 - Product name; 4 - Technical data; 5 - Lot number; 6 - Production place.

### 3. SAFETY INSTRUCTIONS AND PRECAUTIONS

Read these instructions very carefully before installing and using this equipment. Installation, connection and maintenance should be carried out by a qualified technician and in accordance with the local regulations and legislation.

The company shall take no responsibility for the injuries or damaged property if the safety requirements are not followed or the device is modified without the permission of the manufacturer.

#### Main safety rules

---

##### Warnings



- Do not use the unit for purposes other than its' intended use.
  - Do not disassemble or modify the unit in any way.
  - Never use this unit in any explosive or aggressive elements containing environment.
  - Beware of sharp angles while carrying out installation and maintenance works.
  - Do not touch heating elements until they haven't cooled down.
  - Some devices are heavy, you should be very careful while transporting and installing them. Use suitable lifting equipment.
  - Openings of the ducts should be covered during installation.
  - Make sure not to damage the heater when connecting the piping of the water heater. For tightening up, use a wrench/spanner.
-

## 4. INFORMATION ABOUT THE PRODUCT

### 4.1. DESCRIPTION

Cooling coils are used for air cooling in ventilation systems. The coil consists of copper tubes and aluminium fins. The casing is made of galvanized sheet steel. Water type coolers use coolant - cold water. Freon type coolers use the R410A freon. Easy to mount. Suitable for operation indoor environment.

*The purpose of the unit is:* cooling of clean air. The unit is used in clean air ventilation and conditioning systems.



**Not suitable for operation in pools, saunas and other similar premises.**

### 4.2. DIMENSIONS AND WEIGHT

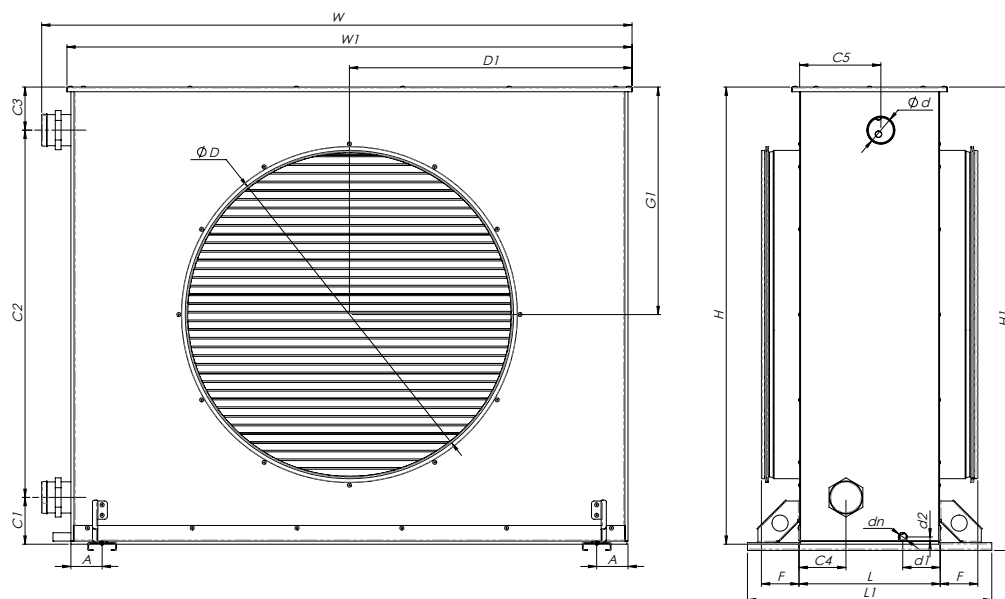


Figure 4.2.1. AVA S dimensions

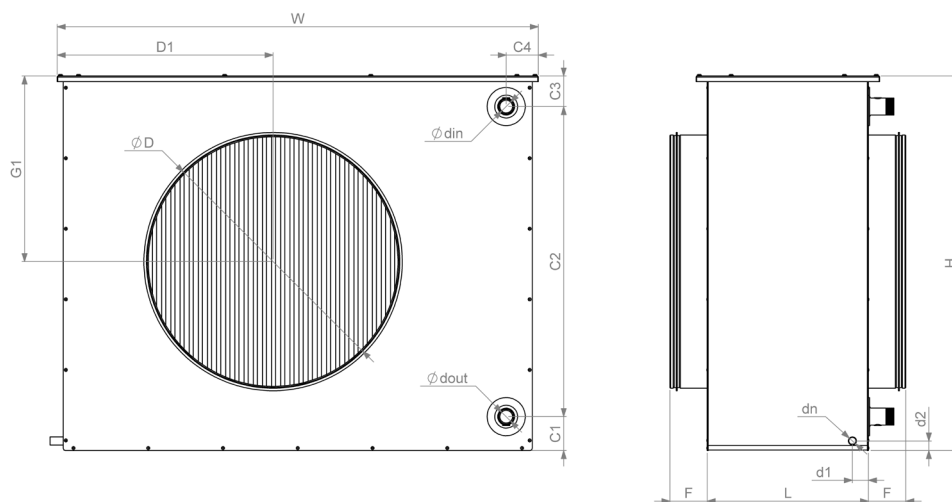


Figure 4.2.2. AVA DX dimensions

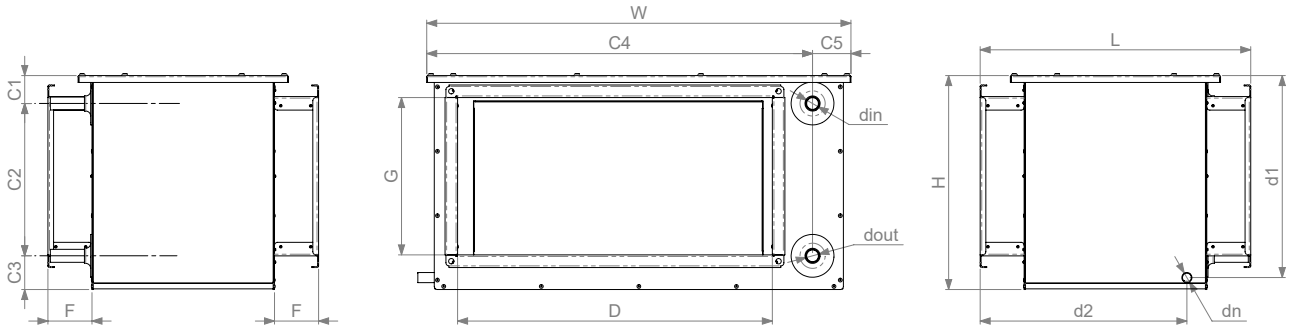


Figure 4.2.3. RWC dimensions

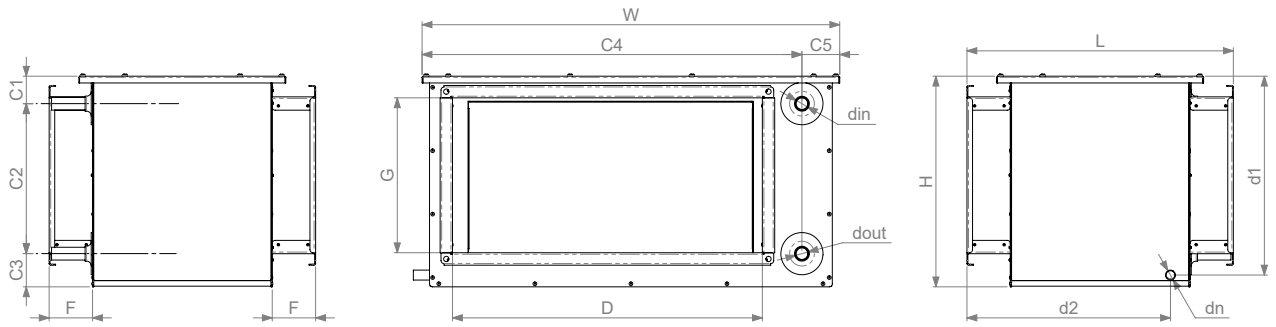


Figure 4.2.4. RFC dimensions

AVA S		100	125	160	200	250	315	400	500	630	710
øD	[mm]	100	125	160	200	250	315	400	500	630	710
D1	[mm]	166	166	166	203	243	283	364	455	542	691
G1	[mm]	135	135	135	168	202	235	229	368	435	468
ød	[mm]	22	22	22	22	22	22	28	42	54	54
C1	[mm]	53	53	53	119	159	62	114	73	89	88
C2	[mm]	183	183	183	164	117	364	250	610	705	783
C3	[mm]	38	38	38	58	131	48	111	58	81	70
C4	[mm]	64	64	64	53	123	53	53	58	71	75
C5	[mm]	91	91	91	104	70	104	110	116	136	136
W	[mm]	366	366	366	441	522	604	763	953	1137	1435
W1	[mm]	331	331	331	407	487	567	728	909	1085	1383
H	[mm]	275	275	275	341	408	473	475	741	875	941
L	[mm]	194	194	194	194	194	194	204	216	256	256
F	[mm]	46	46	46	46	53	53	72	72	72	107
dn	[mm]	16	16	16	16	16	16	16	16	16	16
d1	[mm]	72	72	72	72	72	72	72	72	72	72
d2	[mm]	8	8	8	8	8	8	8	8	8	8
Weight	[kg]	5,2	5,2	5,1	7	9,1	11,4	14,4	23,9	35,7	48

AVA DX		315	400	500	630	710
L	[mm]	286	316	317	317	446
H	[mm]	487	512	737	887	937
W	[mm]	596	746	946	1096	1446
F	[mm]	53	73	73	73	73
C1	[mm]	40	40	67	67	85
C2	[mm]	413	438	610	760	774
C3	[mm]	34	34	60	60	78
C4	[mm]	61	50	64	59	102
d1	[mm]	32	32	32	32	32
D1	[mm]	326	400	522	598	625
G1	[mm]	240	253	365	440	465
Ødin	[mm]	16	16	22	28	54
Ødout	[mm]	22	22	28	35	76
d2	[mm]	19	19	19	19	19
ØD	[mm]	315	400	500	630	710
Weight	[kg]	18	23	36	46,4	77,9

RWC		500x250	500x250	700x300	700x300	750x300	750x300	750x350	750x350
		C2	C4	C2	C4	C2	C4	C2	C4
L	[mm]	430	430	430	450	450	450	450	450
W	[mm]	674	674	674	874	924	924	944	944
H	[mm]	340	340	340	390	390	390	440	440
D	[mm]	500	500	500	700	750	750	750	750
G	[mm]	250	250	250	300	300	300	350	350
F	[mm]	70	70	70	70	70	70	70	70
dn	[mm]	16	16	16	16	16	16	16	16
din	[mm]	21	21	21	26	21	26	21	26
dout	[mm]	21	21	21	26	21	26	21	26
C1	[mm]	4	44	44	48	44	48	44	48
C2	[mm]	242	242	292	286	292	286	342	336
C3	[mm]	54	54	54	56	54	56	54	56
C4	[mm]	613	613	814	814	866	866	875	875
C5	[mm]	61	61	59	59	57	57	68	68
d1	[mm]	321	321	371	371	371	371	421	421
d2	[mm]	329	329	349	349	349	349	349	349
Weight	[kg]	18	22	25	30	35	35	40	40

RFC		500x250	500x250	700x300	700x300	750x300	750x300	750x350	750x350
		F2	F4	F2	F4	F2	F4	F2	F4
L	[mm]	430	430	450	450	450	450	450	450
W	[mm]	674	674	874	815	924	924	944	944
H	[mm]	339	339	390	390	390	390	440	440
D	[mm]	500	500	700	700	750	750	750	750
G	[mm]	250	250	300	300	300	300	350	350
din	[mm]	12	12	12	12	12	22	16	22
dout	[mm]	16	16	16	16	16	28	22	28
C1	[mm]	45	45	45	45	45	52	49	40
C2	[mm]	240	240	290	290	290	278	334	303
C3	[mm]	54	54	54	54	54	60	54	46
C4	[mm]	612	612	815	815	866	866	876	863
C5	[mm]	61	61	59	59	58	58	68	59
d1	[mm]	321	321	371	371	371	371	421	413
d2	[mm]	329	329	349	349	349	349	349	340
dn	[mm]	16	16	16	16	16	16	16	
F	[mm]	70	70	70	70	70	70	70	
Weight	[kg]	17	17	30	30				

## 5. INSTALLATION

### 5.1. RECEPTION OF GOODS

Each device is carefully checked before transportation. When receiving the goods, checking the devices for any damage made during transportation is recommended. If any damage to the unit is observed, immediately contact the representatives of a transport company. Please inform the representative of the manufacturer, if any deviation of the device is noticed.

### 5.2. TRANSPORTATION AND STORAGE

- All units are factory-packaged to withstand normal conditions of transportation.
- When unpacking, check the unit for any damage made during transportation. Installing of damaged units is not allowed!
- **The packaging is used for protection purpose only!**
- When unloading and storing the units, use suitable lifting equipment to avoid damage and injuries. The storage place must be protected against dirt and water.
- The recommended storage period should not be longer than one year.

### 5.3. UNPACKING

- Open the box.
- Take out the unit of the box.
- After unpacking the unit, examine it to make sure that no damage was made during transportation. Installing of damaged units is not allowed!
- Before commencing the installation of the unit, please check if all ordered equipment have been delivered. Any variation from the ordered equipment list must be reported to the product supplier.

### 5.4. MOUNTING

Installing should only be performed by qualified and trained staff.

Coils are designed for mounting in horizontal position.

Water connection process should be processed using mounting scheme (see the scheme S1).

S1:

- a - water flow in;
- b - air flow;
- c - water flow out.

When cooler is already mounted the draining system has to be connected. In order to do that siphon must be screwed to the cooler draining exhaust.

The draining system should be filled up with at least 0,5 l of water (siphon must be always filled with water).

Check if water reaches sewerage system.

When installed, the cooler should have an angle of 0-3° (fig. S2).

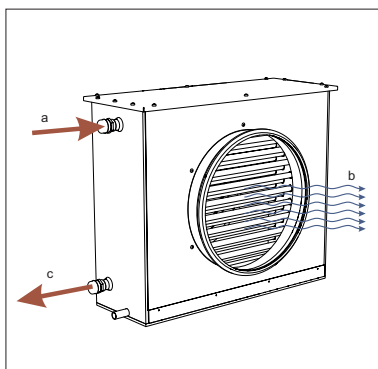


Figure 5.4.1. S1 - AVA S

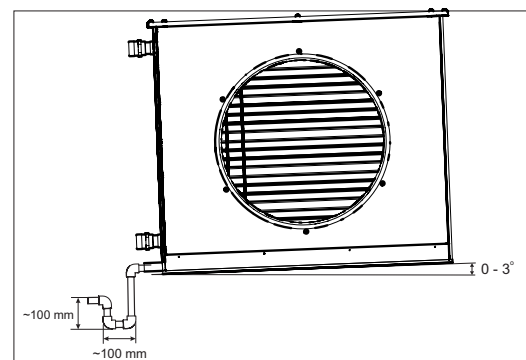


Figure 5.4.2. S2 - AVA S



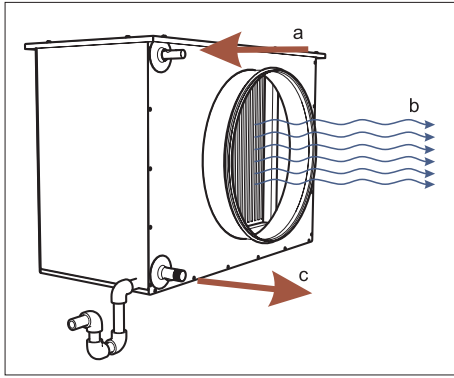


Figure 5.4.3. S1 - AVA DX

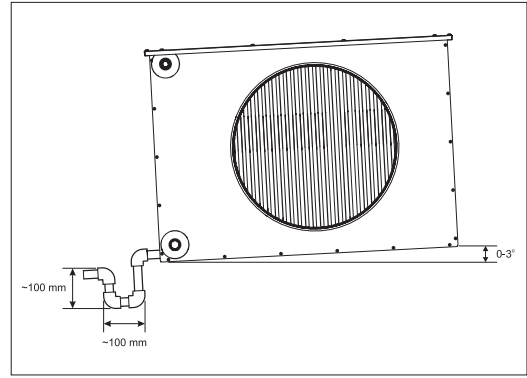


Figure 5.4.4. S2 - AVA DX

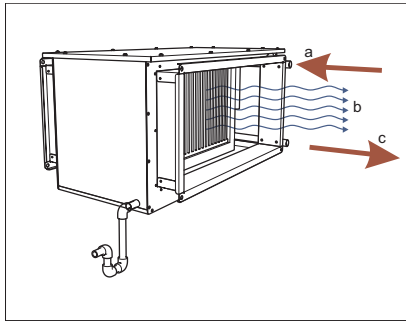


Figure 5.4.5. S1 - RWC/RFC

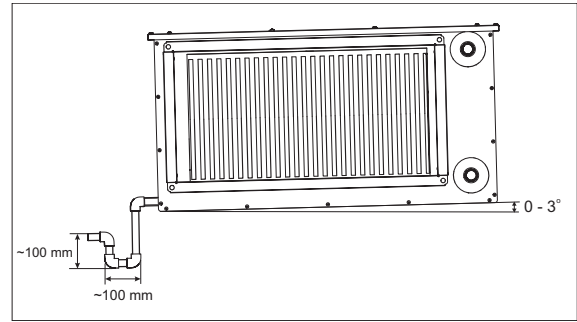


Figure 5.4.6. S2 - RWC/RFC

## 6. MAINTENANCE

In order to ensure proper functioning of the system, maintenance requirements and its periods should be observed. Otherwise, the warranty shall be void.

Maintenance shall be performed only by experienced and trained qualified personnel.  
During maintenance, it is recommended to check the proper operation of the product at regular intervals.

During the periodic inspection, make sure that:

1. There is no mechanical damage on the casing.
2. There is no coolant leak.
3. The system has proper pressure (it is especially important for freon type coolers).
4. There is no air in the system of the water cooler.
5. There is proper uninterrupted water circulation in the system of the water type cooler.
6. The air ducts are connected tightly, i.e. there are no cracks, tears, or other mechanical damage that may cause leakage in the system.

### Cleaning

If cooler is soiled it should be cleaned.

1. Detach unit from ventilation and water supply systems.
2. Coil can be cleaned using tepid water and alkaline mixture which does not generate corrosion on aluminium;

## 7. DECLARATION OF CONFIRMITY

Manufacturer

**SALDA, UAB**  
**Ragainės g. 100**  
**LT-78109 Šiauliai, Lithuania**  
**Tel.: +370 41 540415**  
**www.salda.lt**

Hereby confirms that the following products - Air handling units:

**AVA S/AVA DX/RWC/RFC\***

(where by „\*“ indicates possible unit design size and modification)

Provided it was delivered and installed in the facility in accordance with the included installation instructions, comply with all applicable requirements in the following directives:

**Machinery Directive 2006/42/EC**  
**Pressure Equipment Directive 2014/68/EU**

The following harmonized standards are applied in applicable parts:

LST EN ISO 12100:2011 - Safety of machinery - General principles for design - Risk assessment and risk reduction.  
 LST EN 378-2:2017 - Refrigerating systems and heat pumps - Safety and environmental requirements - Part 2: Design, construction, testing, marking and documentation.

Should any alterations be made in the products, this declaration will no longer apply.

**Notified body:** VšĮ Technikos priežiūros tarnyba, Naugarduko g. 41, LT – 03227 Vilnius, Lithuania, identification number 1399.

**Quality:** Salda UAB activities are in line with the international quality management system standard **ISO 9001:2015**.

Date 2022-01-27



Giedrius Taujenis  
 Product manager

## 8. WARRANTY

1. All equipment manufactured in our factory is checked in operating conditions and tested before delivery. Test protocol is supplied together with the unit. The equipment is shipped in good working order and condition to the direct client. The unit is warranted for the period of two years from the invoice date.
2. If equipment is found to have been damaged during transportation, a claim should be made against carrier, as we assume no responsibility for such damage.
3. This warranty does not apply:
  - 3.1. when transportation, storage, installation and maintenance instructions of the unit are violated;
  - 3.2. when the equipment is improperly maintained, mounted - inadequate maintenance;
  - 3.3. when the equipment without our knowledge and permission has been upgraded or unskilled repairs were made;
  - 3.4. when the unit was used not for its original purpose.
  - 3.5. Company SALDA UAB is not responsible for potential loss of property or personal injury in cases where AHU is manufactured without a control system and the control system will be installed by the client or third parties. The manufacturer's warranty does not cover devices that will be damaged by installing the control system.
4. This warranty does not apply at these malfunction cases:
  - 4.1. mechanical damage;
  - 4.2. damage caused by entering outside objects, materials, liquids;
  - 4.3. damage caused by natural disaster, accident (voltage change in the electricity network, lightning, etc..).
5. The company assumes no liability for its products either directly or indirectly damage, if the damage is caused by failure to comply with installation and mounting regulations, deliberate or careless users or third-party behavior.

These conditions are readily discernable when the equipment is returned to our factory for inspection.

If the direct client determines that equipment is found to be faulty, or a breakdown occurred, he should inform the manufacturer within five working days and deliver the equipment to manufacturer. Delivery costs should be covered by customer.



**Manufacturer reserves the right to change this technical passport any time without prior notice, if some typographic errors or inaccurate information is found, as well as after improving the apps and/or the devices. Such changes will be included in the new issues of the technical passport. All illustrations are just for information and thus may differ from the original device.**

### 8.1. LIMITED WARRANTY COUPON

*Warranty term*  
**24 months\***

I received complete package and technical manual of the product ready for usage. I have read warranty terms and conditions and agree with them:

.....  
 Customer's signature

\*refer to WARRANTY CONDITIONS

*Dear User, we appreciate your choice and do hereby guarantee that all ventilation equipment manufactured by our Company is inspected and thoroughly tested. An operational and high-quality product is sold to the direct buyer and shipped from the territory of the factory. It is provided with a 24-month warranty since invoice issue date.*

*Your opinion is important to us, thus we always look forward to hearing your comments, feedback, or suggestions regarding technical and operational characteristics of the Products.*

*In order to avoid any misunderstandings, please read the instructions for installation and operation of the product as well as other technical documents of the product carefully. The number of the Limited Warranty Coupon and serial number of the product specified on the silver identification sticker attached to the housing must match.*

*The Limited Warranty Coupon shall be valid provided that the seller's stamps and records are clear. It is prohibited to change, delete, or rewrite the data specified on it in any manner – such a coupon shall be invalid.*

*With this Limited Warranty Coupon the manufacturer confirms one's obligations to implement the imperative requirements established by effective laws on protection of consumer rights in the event of identification of any defects of the products.*

*The manufacturer reserves the right to refuse provision of free warranty servicing in cases when the warranty conditions listed below are disregarded.*







## PRODUCT MAINTENANCE TABLE

Product name*		
SERIAL number*		
installation	interval	Date
Fan cleaning	Once per year**	_____
Heat-exchanger cleaning	Once per year**	_____
Filter replacement	Every 3-4 months**	_____
		_____
		_____
		_____
		_____
		_____
		_____

\* - Look at the product label.

\*\* - At least.

NOTE. The customer shall be required to complete the Product Maintenance Table.

## MANUALS IN OTHER LANGUAGES

DE



<https://select.salda.lt/file/ava-s-ava-dx-rfx-rwc-de>

FR



<https://select.salda.lt/file/ava-s-ava-dx-rfx-rwc-fr>

IT



<https://select.salda.lt/file/ava-s-ava-dx-rfx-rwc-it>

LT



<https://select.salda.lt/file/ava-s-ava-dx-rfx-rwc-lt>

RU



<https://select.salda.lt/file/ava-s-ava-dx-rfx-rwc-ru>



MAN000385

