



**AVS S**  
**SVS / SVS V**

EN OPERATION, INSTALLATION & MAINTENANCE INSTRUCTIONS



**1. CONTENT**

<b>2. SYMBOLS AND MARKING</b>	<b>3</b>
<b>3. SAFETY INSTRUCTIONS AND PRECAUTIONS</b>	<b>4</b>
<b>4. INFORMATION ABOUT THE PRODUCT</b>	<b>5</b>
4.1. DESCRIPTION	5
4.2. DIMENSIONS AND WEIGHT	5
<b>5. INSTALLATION</b>	<b>7</b>
5.1. RECEPTION OF GOODS	7
5.2. TRANSPORTATION AND STORAGE	7
5.3. UNPACKING	7
5.4. MOUNTING	7
<b>6. MAINTENANCE</b>	<b>9</b>
<b>7. INSPECTION OF THE VENTILATION SYSTEM</b>	<b>9</b>
<b>8. DECLARATION OF CONFORMITY</b>	<b>10</b>
<b>9. WARRANTY</b>	<b>11</b>
9.1. LIMITED WARRANTY COUPON	11

## 2. SYMBOLS AND MARKING



**Warning – pay attention**



**Additional information**

Apply the technical label on the unit (in an easily accessible location) or on the dashed location of the technical manual to keep the important information about the unit.

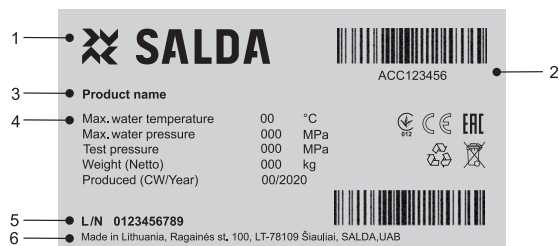


Figure 2.1. Technical label

1 - Logo; 2 - Product code (SKU); 3 - Product name; 4 - Technical data; 5 - Lot number; 6 - Production place.

### 3. SAFETY INSTRUCTIONS AND PRECAUTIONS

Read these instructions very carefully before installing and using this equipment. Installation, connection and maintenance should be carried out by a qualified technician and in accordance with local regulations and legislation.

The company shall take no responsibility for the injuries or damaged property if the safety requirements are not followed or the device is modified without the permission of the manufacturer.

#### Main safety rules

---

##### Warnings



- Do not use the unit for purposes other than its' intended use.
  - Do not disassemble or modify the unit in any way.
  - Never use this unit in any explosive or aggressive elements containing environment.
  - Beware of sharp angles while carrying out installation and maintenance works.
  - Do not touch heating elements until they have cooled down.
  - Some devices are heavy, you should be very careful while transporting and installing them. Use suitable lifting equipment.
  - Openings of the ducts should be covered during installation.
  - Make sure not to damage the heater when connecting the piping of the water heater. For tightening up, use a wrench/spanner.
-

## 4. INFORMATION ABOUT THE PRODUCT

### 4.1. DESCRIPTION

Used in ventilation systems.  
 Heaters are made of copper tubes and aluminium plates. The housing is made of galvanized steel.  
 The service panel is easily removed after unscrewing 8 bolts. With the cover removed, the heater can be cleaned and inspected.  
 Easy to mount.  
 Suitable for operation indoor environment.

*The purpose of the unit is:* heating of clean air. The unit is used in clean air ventilation and conditioning systems.

 **Not suitable for operation in pools, saunas and other similar premises.**

### 4.2. DIMENSIONS AND WEIGHT

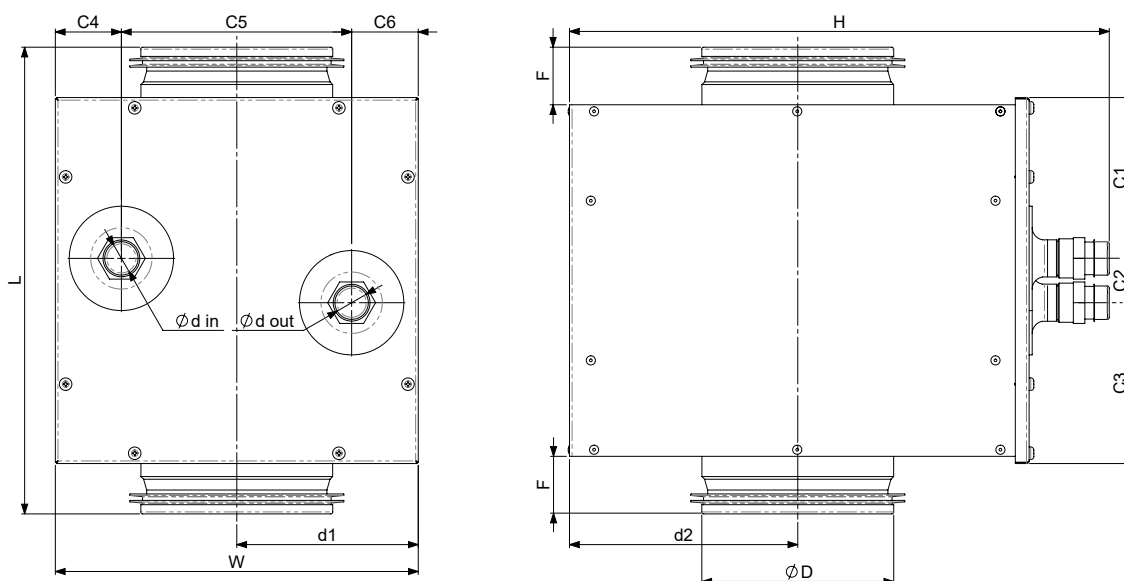


Figure 4.2.1. AVS S dimensions

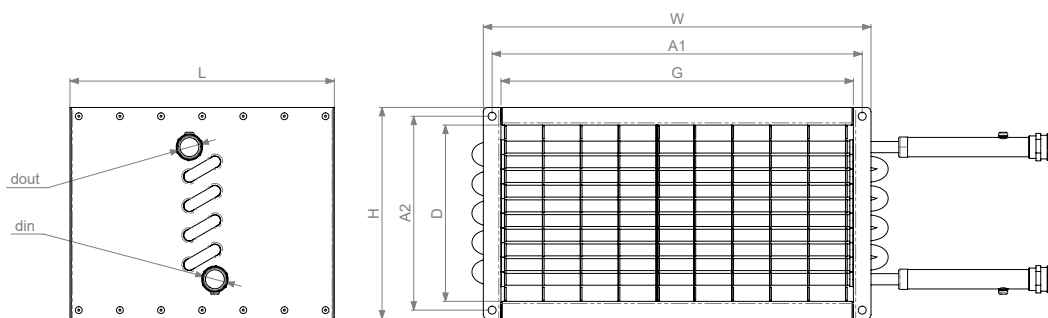


Figure 4.2.2. SVS / SVS V dimensions

AVS S		100	125	160	200	250	315	400	500
L	[mm]	304			318			358	
W	[mm]	236		303		370	403	470	570
H	[mm]	352				405	491	585	788
øD	[mm]	100	125	160	200	250	315	400	500
ødin	[mm]	21,3						26,9	
ødout	[mm]	21,3						26,9	
F	[mm]	37	38	37		45		74	64
C1	[mm]	105							
C2	[mm]	29							
C3	[mm]	105							
C4	[mm]	43						53	
C5	[mm]	150				317		365	467
C6	[mm]	43						53	
d1	[mm]	118		152		185	202	235	285
d2	[mm]	152	149	152		175	218	264	366
Weight	[kg]	4,6		5,4		7	10,2	12	18

SVS		400x200-2	400x200-4	500x250-2	500x250-4	500x300-2	500x300-4	600x300-2	600x300-4
L	[mm]	300							
W	[mm]	440		540				640	
H	[mm]	240		290		340			
G	[mm]	400		500				600	
D	[mm]	200		250		300			
din		3/4							
dout		3/4							
A1	[mm]	420		520				620	
A2	[mm]	220		270		320			
Weight	[kg]	8	10,5	10	13,5	13	16	14	18

SVS		600x350-2	600x350-4	700x400-2	700x400-4	800x500-2	800x500-4	1000x500-2	1000x500-4
L	[mm]	300							
W	[mm]	640		740		840		1040	
H	[mm]	390		440		540			
G	[mm]	600		700		800		1000	
D	[mm]	350		400		500			
din		3/4				1			
dout		3/4				1			
A1	[mm]	620		720		820		1020	
A2	[mm]	370		420		520			
Weight	[kg]	10	19,3	17	24,8	23	32	27	39,5

SVS V		500x250-2	600x300-2	900x300-2
L	[mm]	300		
W	[mm]	540	640	940
H	[mm]	290	340	370
G	[mm]	500	600	900
D	[mm]	250	300	
din		1/2		
dout		1/2		
A1	[mm]	520	620	920
A2	[mm]	270	320	
Weight	[kg]	10	6,3	18

## 5. INSTALLATION

### 5.1. RECEPTION OF GOODS

Each device is carefully checked before transportation. When receiving the goods, checking the devices for any damage made during transportation is recommended. If any damage to the unit is observed, immediately contact the representatives of a transport company. Please inform the representative of the manufacturer, if any deviation of the device is noticed.

### 5.2. TRANSPORTATION AND STORAGE

- All units are factory-packaged to withstand normal conditions of transportation.
- When unpacking, check the unit for any damage made during transportation. **Installing the damaged units is not allowed!**
- **The packaging is used for protection purposes only!**
- When unloading and storing the units, use suitable lifting equipment to avoid damage and injuries. The storage place must be protected against dirt and water.
- Do not lift units by holding on power supply cables, connection boxes, air intake or discharge flanges. Avoid hits and shock overloads.
- The units must be transported to the storage or installation site using forklifts.
- The recommended storage period should not be longer than one year.

### 5.3. UNPACKING

- Open the box.
- Take out the unit of the box.
- After unpacking the unit, examine it to make sure that no damage was made during transportation. Installation of damaged units is not allowed!
- Before commencing the installation of the unit, please check if all ordered equipment has been delivered. Any deviation from the ordered equipment list must be reported to the product supplier.

### 5.4. MOUNTING

- Installation works should be carried out by qualified and trained staff only.
- Remove safety cover before starting mounting procedures (fig. S1).
- Coils are designed for mounting in horizontal position.
- The unit shall be installed firmly and tightly to ensure safe operation.
- The unit shall be mounted on a flat surface so that the product is not leaning.
- Installation shall be performed in such manner that the weight of the air duct system and its components would not overload the ventilation unit.
- Enough space must be left during installation for opening of the maintenance door of the unit.
- When connecting water heater, the weight of the water pipes and thermal tensions should not be transferred on the heater branches.
- When mounting threaded connections of supply pipes and heaters, use two spanners (fig. S3).
- Pipes are connected to the heater in such way that they could be easily disassembled and the heater could be removed from the unit casing when performing service or repair works.
- Pipes with supply and return heat carriers must be connected in such way that the heater would work in the opposite direction for the air flow. If the heater works using the same directions, the mean temperature difference decreases which affects the heater efficiency (fig. S2).

Max. operating pressure: 2,2 MPa;

Max. operating temp.: 110 °C.

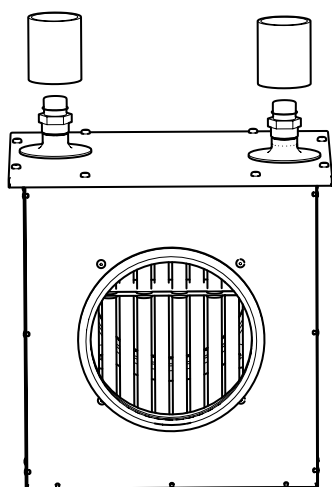


Figure 5.4.1. S1

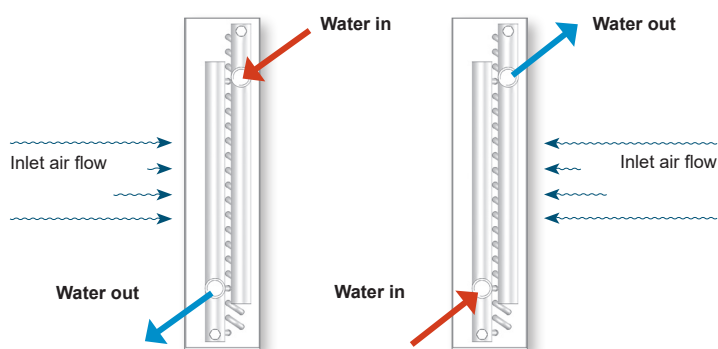


Figure 5.4.2. S2

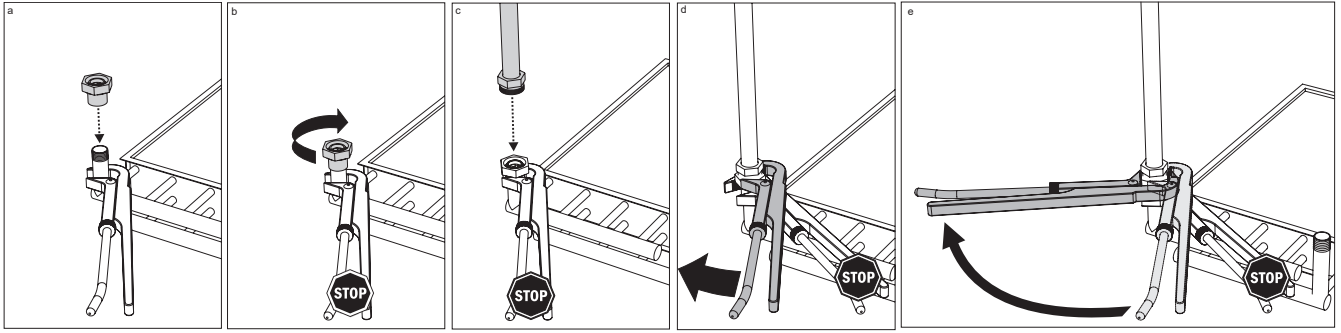


Figure 5.4.3. S3



## 6. MAINTENANCE

### Checking:

- Check if connections between the unit and ducts are hermetical.
- Check performance of thermal circulation. Temporary increase water temperature for this.
- Check tightness of water supply system.

### Cleaning:

- Disconnect and remove heater.
- If heater is soiled - use vacuum cleaner or airflow blast.
- In case of heavy choking - clean with warm water and mild detergent solution.
- Check tightness of tubes of disconnected and removed heater with high-pressure air.

## 7. INSPECTION OF THE VENTILATION SYSTEM

In order to ensure the efficient operation of the ventilation unit, the inspection of the entire ventilation system, i.e. inspect if the air collection grating or the units for the air supply to the room are not contaminated, must be carried out once a year. Inspect if the air duct system is not contaminated. Clean or replace these units if necessary.

## 8. DECLARATION OF CONFORMITY

Manufacturer

**SALDA, UAB**  
Ragainės g. 100  
LT-78109 Šiauliai, Lithuania  
Tel.: +370 41 540415  
www.salda.lt

Hereby confirms that the following products - Air handling units:

**AVS S / SVS / SVS V\***

(where by „\*“ indicates possible unit design size and modification)

Provided it was delivered and installed in the facility in accordance with the included installation instructions, comply with all applicable requirements in the following directives:

**Machinery Directive 2006/42/EC**  
**Pressure Equipment Directive 2014/68/EU**

The following harmonized standards are applied in applicable parts:

LST EN ISO 12100:2011 - Safety of machinery - General principles for design - Risk assessment and risk reduction.

LST EN 378-2:2017 - Refrigerating systems and heat pumps - Safety and environmental requirements - Part 2: Design, construction, testing, marking and documentation.

Should any alterations be made in the products, this declaration will no longer apply.

**Notified body:** VšĮ Technikos priežiūros tarnyba, Naugarduko g. 41, LT – 03227 Vilnius, Lithuania, identification number 1399.

**Quality:** Salda UAB activities are in line with the international quality management system standard **ISO 9001:2015**.

Date 2022-01-27



Giedrius Taujenis  
Product manager

## 9. WARRANTY

1. All equipment manufactured in our factory is checked in operating conditions and tested before delivery. The test protocol is supplied together with the unit. The equipment is shipped in good working condition to the end client. The unit is warranted for the period of two years from the date of the invoice.
2. If equipment is found to have been damaged during transportation, a claim should be made against the carrier, as we assume no responsibility for such damage.
3. This warranty does not apply:
  - 3.1. when transportation, storage, installation and maintenance instructions of the unit are violated;
  - 3.2. when the equipment is improperly maintained, mounted - inadequate maintenance;
  - 3.3. when the equipment without our knowledge and permission has been upgraded or unskilled repairs were made;
  - 3.4. when the unit was used not for its original purpose.
  - 3.5. Company SALDA UAB is not responsible for potential loss of property or personal injury in cases where the Air Handling unit is manufactured without the control system and the control system is installed by the client or the third parties. The manufacturer's warranty does not cover devices that will be damaged by installing the control system.
4. This warranty does not apply to these malfunction cases:
  - 4.1. mechanical damage;
  - 4.2. damage caused by entering outside objects, materials and liquids;
  - 4.3. damage caused by natural disasters, accidents (voltage change in the electricity network, lightning, etc.).
5. The company assumes no liability for the damage to its products neither directly nor indirectly, if the damage is caused by failure to comply with the installation and mounting regulations, deliberate or careless users or third-party behaviour.

These conditions are readily discernible when the equipment is returned to our factory for inspection. If the direct client determines that equipment is found to be faulty, or a breakdown occurred, he should inform the manufacturer within five working days and deliver the equipment to the manufacturer. Delivery costs should be covered by the customer.



**The manufacturer reserves the right to change this technical passport at any time without prior notice if some typographic errors or inaccurate information is found, as well as after improving the apps and/or the devices. Such changes will be included in the new issues of the technical passport. All illustrations are just for information and thus may differ from the original device. The newest manual version is available at <https://select.salda.lt>**

### 9.1. LIMITED WARRANTY COUPON

*Warranty term*  
**24 months\***

I received the complete package and technical manual of the product ready for usage. I have read the warranty terms and conditions and agree with them:

.....  
 Customer's signature

\*Refer to WARRANTY CONDITIONS

*Dear User, we appreciate your choice and do hereby guarantee that all ventilation equipment manufactured by our Company is inspected and thoroughly tested. An operational and high-quality product is sold to the direct buyer and shipped from the territory of the factory. It is provided with a 24-month warranty from the issue date of the invoice. Your opinion is important to us, thus we always look forward to hearing your comments, feedback, or suggestions regarding technical and operational characteristics of the Products. In order to avoid any misunderstandings, please read the instructions for installation and operation of the product as well as other technical documents of the product carefully. The number of the Limited Warranty Coupon and the serial number of the product specified on the silver identification sticker attached to the housing must match. The Limited Warranty Coupon shall be valid provided that the seller's stamps and records are clear. It is not allowed to change, delete, or rewrite the data specified on it in any manner – such a coupon shall be invalid. With this Limited Warranty Coupon the manufacturer confirms his obligations to implement the imperative requirements established by effective laws on protection of consumer rights in the event of identification of any defects of the products. The manufacturer reserves the right to refuse provision of free warranty servicing in cases when the warranty conditions listed below are disregarded.*

## PRODUCT MAINTENANCE TABLE

---

Product name\*

---

**SERIAL** number\*

---

\* - Look at the product label.

**NOTE.** The customer shall be required to complete the Product Maintenance Table.

## MANUALS IN OTHER LANGUAGES

DE



<https://select.salda.lt/file/avs-svs-svsv-de>

FR



<https://select.salda.lt/file/avs-svs-svsv-fr>

IT



<https://select.salda.lt/file/avs-svs-svsv-it>

LT



<https://select.salda.lt/file/avs-svs-svsv-lt>

RU



<https://select.salda.lt/file/avs-svs-svsv-ru>



MAN000394

